



Self Diagnostics

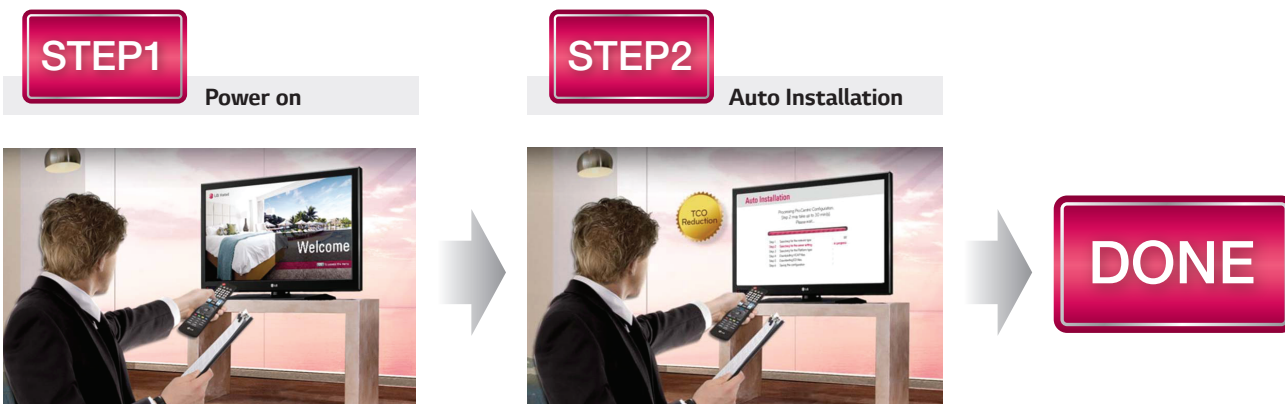
Self Diagnostics lets partners to recognize issues easily and quickly without visiting the sites. LG provides APIs* to the partners so that engineers can check broadcasting signals, TV conditions, network status, and input/app. conditions.



*APIs: Application Programming Interface

EzManager

EzManager provides convenient installation function that helps to set up Pro:Centric TV settings automatically without extra effort of configuration. Auto-installation requires 1~3 minutes while manual installation requires 3~5 minutes.

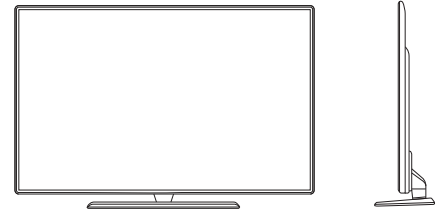


Specification

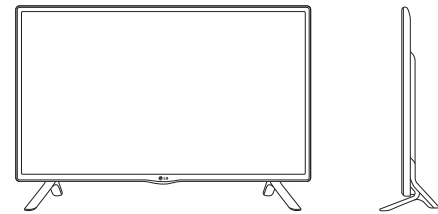
MODEL NAME		LY541H (EU)	LY540H (EU)	
Model information	Size (Inch)	32"/39"/42"/47"	22H"/28H"/32"/39"/42"/47"	
	Production Model	LY541H-ZA	LY540H-ZA	
Broadcasting	Digital	DVB-T2/C/S2	DVB-T2/C/S2	
	Analog	PAL/SECAM	PAL/SECAM	
Video	Resolution	1920 x 1080 (FHD)	22H"/28H": 1366 x 768 (HD) 32/39/42/47": 1920 x 1080 (FHD)	
Audio	Audio Output	22H"/28H": 5W + 5W, 32/39/42/47": 10W + 10W		
	Sound System	2.0 Ch		
Feature	Pro:Centric	Type	Pro:Centric® V	
	Connectivity	MHL	•	
		Remote diagnostics / Self diagnostics	• (Self diagnostics)	
		EzManager	• (EzManager 2.1)	
		HDMI-CEC	•	
		HTNG-CEC	•	
		Welcome Screen	•	
		Lock Mode	•	
		Multi IR Code	•	
		Hotel Mode	•	
		USB Cloning	•	
		IR Out	•	
		USB Auto Play Back	•	
		External Power	•	
	External Speaker Out	•		
	RJP Compatibility	• (RS232C, HDMI)		
	Swivel	• ± 20°	-	
	Anti-theft System	Kensington Lock	•	-
		Credenza	•	-
		Lock Down Plate	•	-
Side	HDMI In	1		
	USB(2.0)	1		
	Headphone Out(3.5mm Phone Jack)	1		
	CI Slot	1		
Interface	Rear	RF In	2	
		Component In(Y, Pb,Pr) + Audio(L/R)	1(Phone Jack)	
		Digital Audio Out(Optical)	1	
		Clock Interface	1 (Except 22/28")	
		RS-232C(D-sub 9pin)	1	
	HDMI In	1		
	LAN(RJ45)	1		
	Ext.SPK out (3.5mm Phone Jack)	2 (Spk-out 1, Vol. Control 1)		
	Full Scart	1		
	Power	Voltage, Hz	100 ~ 240V, 50/60Hz	
Max (Watts)		22" (55), 28" (68), 32" (91), 39" (112), 42" (113), 47" (116)		
Typical(Watts)		22" (37), 28" (41), 32" (64), 39" (83.5), 42" (84), 47" (90)		
Energy saving (Min)		22" (28), 28" (33.6), 32" (52.5), 39" (68.5), 42" (68.9), 47" (73.8)		
Energy saving (Med)		22" (19), 28" (22.2), 32" (34.6), 39" (45.2), 42" (45.5), 47" (48.7)		
Energy saving (Max)		22" (11), 28" (12.9), 32" (20.1), 39" (26.2), 42" (26.4), 47" (28.3)		
Stand-by		0.3W		
Standard Approval	Safety	CB, CU TR, CE		
	Environment	ROHS, ErP, Eco flower		
Eco	ErP Class	A+ (22", 28", 42", 47"), A (32", 39")		
	On Power Consumption (IEC62097 Edition 2) (W)	17 (22"), 21 (28"), 41 (32"), 50 (39"), 51 (42"), 54 (47")		
	Stand By (W)	0.3W		
	Luminance Ratio (%)	65		
	Average Annual Consumption(kWh)	25 (22"), 31 (28"), 60 (32"), 73 (39"), 74 (42"), 79 (47")		

Dimension

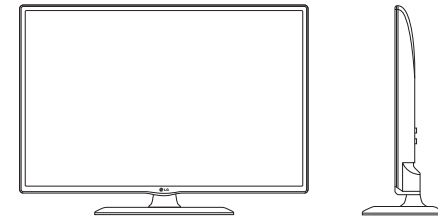
LY541H: 32" / 39" / 42" / 47"



LY540H: 32" / 39" / 42" / 47"



LY540H: 22H" / 28H"



	LY541H	LY540H	
Set (With Stand, WxHxD, mm) / Weight (with stand, Kg)	22H"	-	507.6 x 356 x 140.5 / 3.1
	28H"	-	641.5 x 432 x 170 / 4.8
	32"	732 x 482 x 282 / 8.9	732 x 481 x 207 / 6.2
	39"	885 x 572 x 282 / 10.9	885 x 567 x 218 / 8.3
	42"	961 x 617 x 325 / 12.6	961 x 612 x 218 / 9.5
Vesa Compatibility (mm)	22H": 75 x 75	28H": 100 x 100	
	32/39": 200 x 200	42/47": 400 x 400	

Back Jack Panel

